



BUCK RUB PROTECTION

WHAT IS BUCK RUB? Male deer rub the velvet off of their new antler growth by rubbing their forehead and antlers against the base of a tree. Typically young trees are most susceptible to buck rub.

WHEN DOES BUCK RUB OCCUR? Buck rub occurs in the late summer/early fall, and then again in late fall. Male deer will eventually rub off the outer layers of bark, leaving the young tree susceptible to elements like extreme temperature changes in the late summer and fall, and extreme cold that the outer layers of bark.

HOW DO I PREVENT BUCK RUB?

The best way to protect your trees is to cover them with plastic, mesh, or paper guards. By wrapping them around your tree's trunk, they will prevent deer from rubbing up against the bark and stripping away years of growth.



FOR ADDITIONAL PLANT PROTECTION WE RECOMMEND:

DEER SCRAM & DEER OUT



For areas with heavy deer issues, we recommend rotating deer repellents or using two together to:

- Prevent the deer adapting to the repellent's smells
- Keep up with a repellent's reapplication

GUARANTEE POLICY*

Our customers are our greatest asset. The Farm at Green Village grew into the business we are today based on our loyal customers.

Did you know that all of our Trees, Shrubs, and Perennials come with a 2 year–100% guarantee* for our Rewards Customers when you plant with Bumper Crop®?

Additionally, our pottery comes with a 1-year guarantee, while our houseplants have a 6-month guarantee. If anything has died since it was purchased, we will issue a store credit to get you a suitable replacement. Bring the product back within the guarantee timeframe, and we will do our best to get you exactly what you need. All purchases, large or small, are equally important, but above all customer satisfaction means the most to us.

In order for us to assist you better, please bring in pictures or pieces of a plant and we will do our best to solve any issue.

- Receipt/Proof of Purchase required with photos
- Guarantee value determined from original purchase price
- Plants purchased on sale are guaranteed to sale value
- Plants purchased with store credit/replacement value are not guaranteed
- Landscapers/Design Professionals/Contractors void all guarantees
- Pottery/Statuary, Balled/Burlapped plants, Delivered Goods, and Special Order products may incur a 20% restocking fee
- Plants in above-ground containers are not included in the guarantee.

** Guarantee policy only applicable for Retail Rewards customers. Restrictions apply for commercial vendors.*

DELIVERY SERVICES

We can transport your plants to your home in a safe and timely manner. No matter the size of your purchase, we have a vehicle for the delivery! We deliver not only plants, trees and shrubs, but pottery and other garden accents as well. Delivery charges vary depending on location (zip code) and size of the delivery.

** Certain products are exempt and subject to a delivery surcharge.*



**GET A 2-YEAR GUARANTEE*
WHEN YOU PLANT WITH
BUMPER CROP®**

* ONLY APPLIES TO OUR REWARDS CUSTOMERS

GUIDE TO PLANTING TREES, SHRUBS & PLANTS — & — GUARANTEE INFORMATION



403 GREEN VILLAGE ROAD
GREEN VILLAGE NJ 07935
973-377-8703

THEFARMATGREENVILLAGE.COM
INFO@THEFARMGV.COM



THE 7 STEPS FOR PLANTING SUCCESS

***BEFORE DIGGING, CALL NJ ONE CALL AT 1-800-272-1000 or 811 FOR OPERATORS TO MARK OUT UNDERGROUND UTILITIES**



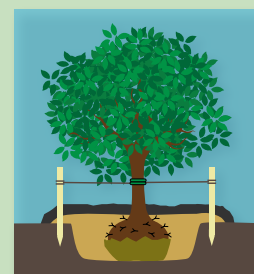
1. DIG A HOLE*

Dig a hole two times as wide but slightly shallower than the plant's root ball. Place the removed topsoil nearby on a tarp, removing any stones, subsoil, or sod.



4. FILLING THE HOLE

Backfill the hole partway, stopping to lightly compact the soil. Complete filling the rest of the hole with soil mix, lightly tamping again. The soil should be at the level of the top of the root ball. Using the rest of the soil mix, create a saucer around the edge of the hole.



6. MULCHING AND STAKING

Apply 2"-3" layer of mulch around the plant, keeping the mulch away from the trunk and stems. Stake trees that may possibly need additional support during windy conditions.



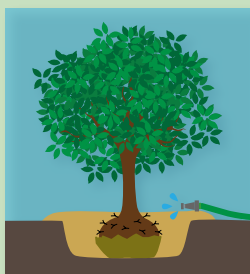
2. SOIL PREPARATION

Mix **Bumper Crop® Organic Soil Builder** and **Espoma Bio-tone® Starter Plus Fertilizer** into the topsoil.

All plants purchased with these products on the same receipt come with a 2-year guarantee.

BUMPER CROP® AMOUNTS:

- 1 cu ft for every 2 shrubs
- 2 cu ft for every balled or burlapped tree
- 2 cu ft for every 25 square feet into the top 6"-8" of soil for flower and vegetable gardens



5. WATERING YOUR NEW PLANT

Fill the soil saucer area with water twice, thoroughly draining in between. The plant will require regular and thorough watering throughout the first year. More frequent watering may be required during periods of extreme heat and active growth. Larger trees require 2 years or more of frequent watering.

WATERING REQUIREMENTS:

- Balled and burlapped plants: 10-15 gallons once a week, applied slowly with a hose or Tree Gator watering bag
- Container-grown plants: 2-3 gallons twice a week or more in drought conditions, applied with a watering can/hose end wand and diffuser
- Annuals and perennials: water every other day or when dry
- Plants in containers/hanging baskets: check frequently and water daily or when dry

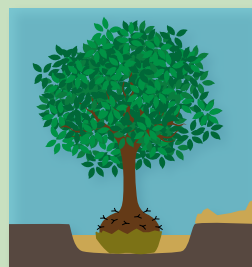
7. FERTILIZING AND CONTINUING CARE

FERTILIZE:

- Annuals: **Miracle Gro** every two weeks
- Vegetables: **Espoma Tomato-tone** every two weeks
- Roses: **Espoma Rose-tone** every six to eight weeks starting in April
- Evergreens: **Espoma Holly-tone** the following season, once in the spring and once in the fall
- Shade & Flowering Trees: **Espoma Tree-tone** the following season, once in the spring and once in the fall
- Flowering Shrubs and Perennials: **Espoma Plant-tone** the following season

PLANT PROTECTION:

- Deer Foraging: **Deer Out** or **Deer Scram**
- Winter Buck Rub: Wrap trunks with **black mesh, vinyl spiral tree wrap, brown paper roll, or Clark's Tree Wrap**
- Winter Burn: **Wilt Prof**



3. PREPARE & PLACE PLANT

BALLED AND BURLAPPED PLANTS: Place in hole 1"-2" above soil level, and partially backfill hole to stabilize plant position. Remove all twine and string, and peel back the top third of the burlap metal cage.

CONTAINER PLANTS: Remove plastic pot, gently loosening outside roots (make shallow cuts around the root ball if compacted), and place plant in hole as described above.

